

ILFC Series

Fixed Flow Pressure Compensated Control Valve

Flow Control Valves maintain the flow rate of hydraulic fluid to a specified value.

Applications include hydraulic cylinders required to extend or retract at constant speeds and hydraulic motors required to rotate at constant speeds. When used with a fixed delivery pump the excess flow is By-Passed across a relief valve.

Specifications

Maximum Pressure: 210 bar, 3000 psi

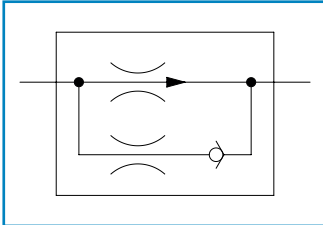
Maximum Flow: 16 lpm, 4 US gpm

Porting: SAE, BSP, & NPT (see Table 1)

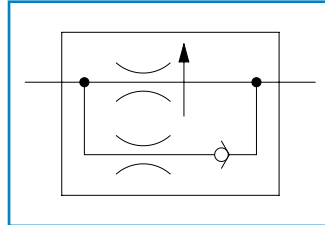
Material: Steel & Aluminum components in a Zinc plated Steel body. NBR seals.

Weight: See Table 3

ISO Symbol



ANSI Symbol



Milwaukee, WI 53235, USA

Tel: +1 (414) 769-6400

sales-us@webtec.com

St. Ives, Cambs. PE27 3LZ, UK

Tel: +44 (0) 1480 397 400

sales-uk@webtec.com

www.webtec.com

Features

- Pressure compensated to ensure a constant flow rate under varying pressures.
- Pre-set in factory to customer requirements at any flow rate between 1.5 lpm - 16 lpm, 0.5 US gpm - 4 US gpm.
- Uncontrolled flow is permitted in reverse direction.
- Zinc plated clear passivate.
- Cartridge insert version available, without steel body.



Ordering Codes

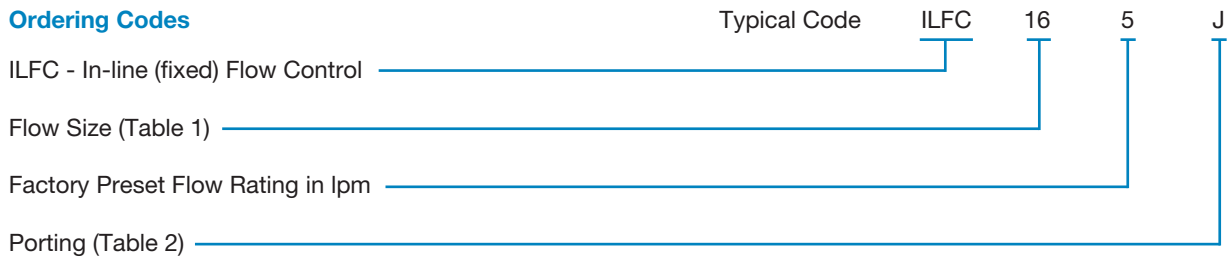


Table 1: Flow size

Code	Flow Range (lpm)	Flow Range (US gpm)
14	1.5 - 14	0.5 - 3.7
16	1.5 - 16	0.5 - 4.2

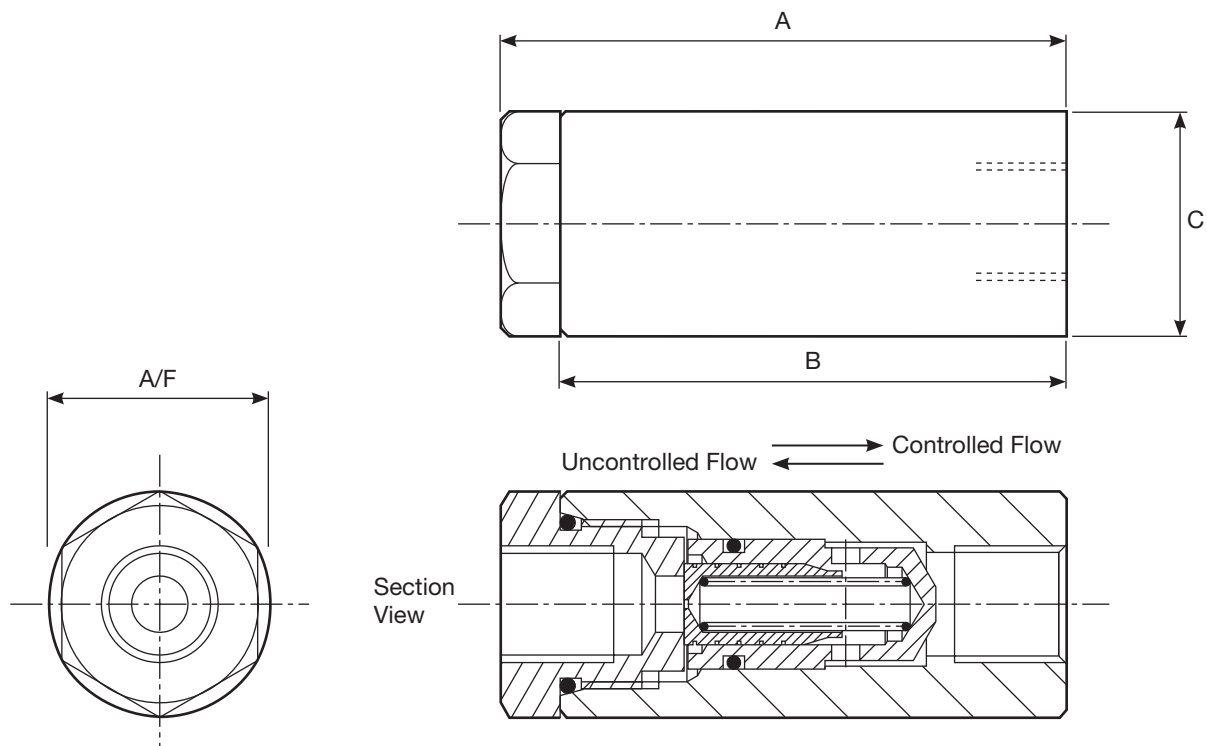
Table 2: Porting

Porting Code	Flow Size Code	Porting
J	14	1/4" BSPP
	16	3/8" BSPP
A	14	1/4" NPTF*
	16	3/8" NPTF*
G	14	7/16" -20UN #4 SAE ORB
	16	9/16" -18UN #6 SAE ORB

* All NPTF threads are to ANSI B1.20.3 -1976 Class 1. As stated in the standard it is recommended that "sealing is accomplished by the means of a sealant applied to the thread". NPT fittings may also be used to connect to NPTF ports (also with a sealant applied to the thread).

Table 3: Dimensions mm (In)

Porting	A	B	C	A/F	Weight kg (lb)
1/4" BSPP	63.8 (2.51)	57.2 (2.25)	25.4 (1.00)	22.2 (0.87)	0.18 (0.4)
3/8" BSPP	77.3 (3.04)	57.2 (2.25)	25.4 (1.00)	22.2 (0.87)	0.20 (0.4)
1/4" NPTF	87.2 (3.43)	62.2 (2.45)	25.4 (1.00)	22.2 (0.87)	0.25 (0.5)
3/8" NPTF	87.2 (3.43)	62.2 (2.45)	25.4 (1.00)	22.2 (0.87)	0.22 (0.5)
7/16" -20UN #4 SAE ORB	63.8 (2.51)	57.2 (2.25)	25.4 (1.00)	22.2 (0.87)	0.18 (0.4)
9/16" -18UN #6 SAE ORB	87.2 (3.43)	62.2 (2.45)	25.4 (1.00)	22.2 (0.87)	0.24 (0.5)



Other threads available to special order.

Reverse Flow Typical Pressure Drop

All tests completed using ISO32 Mineral oil at 40 degrees C (32 cSt)

